

# CALOOSAHATCHEE D'TOWN SUN TRAIL ALTERNATIVE

## MULTIMODAL FEASIBILITY STUDY



**Kickoff Meeting**  
January 31, 2025





# AGENDA

Introductions

Meeting Purpose

About the Project

Team Introductions and Roles

Scope and Tasks

Deliverables and Schedule

Study Area

Data Collection

City of Fort Myers Update

Project Steering Committee

Stakeholder and Public Outreach

Tools for Trail Usage and Demand Analysis

Schedule and Next Steps

Comments and Questions





# MEETING PURPOSE

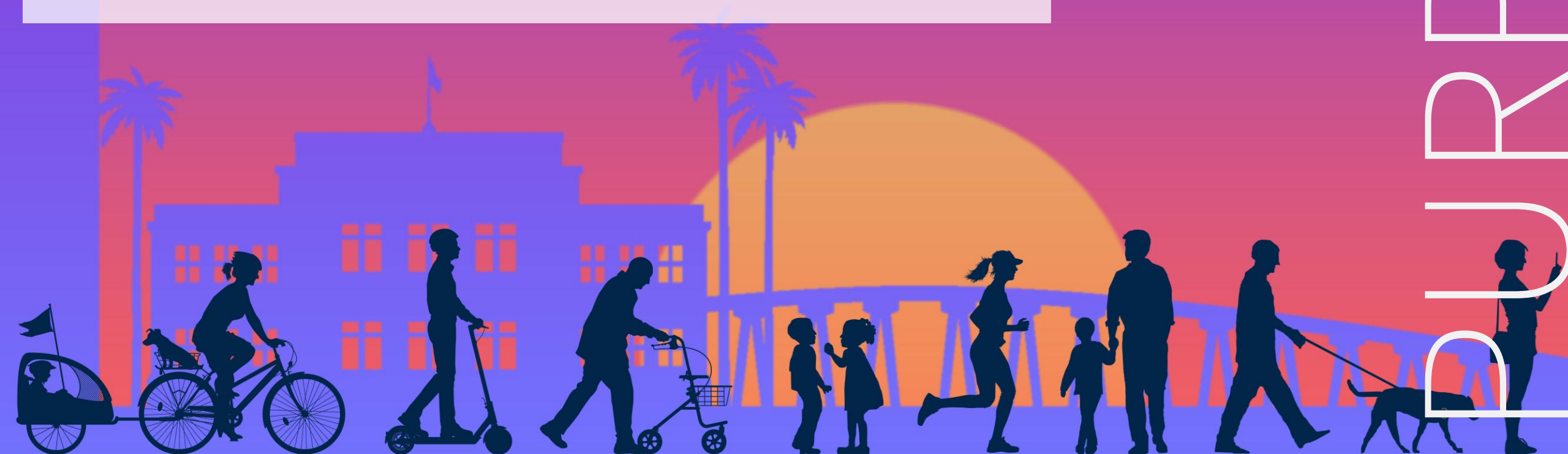
## TO REVIEW:

- i. Scope and Tasks
- ii. Project Deliverables
- iii. Schedule
- iv. Study Area Map
- v. Data Collection

## TO DISCUSS:

- i. Project Study Area
- ii. Map of Preliminary Corridors
- iii. Project Stakeholder Committee

W  
S  
O  
R  
R  
U



# ABOUT US



Spikowski  
Planning



thomson

# SUN TRAIL PROGRAM

## SUN Trail Network

- EXISTING
- PROGRAMMED/FUNDED
- PARTIALLY FUNDED FOR PRE-CONST
- UNFUNDED GAP

## SUN TRAIL PROGRAM

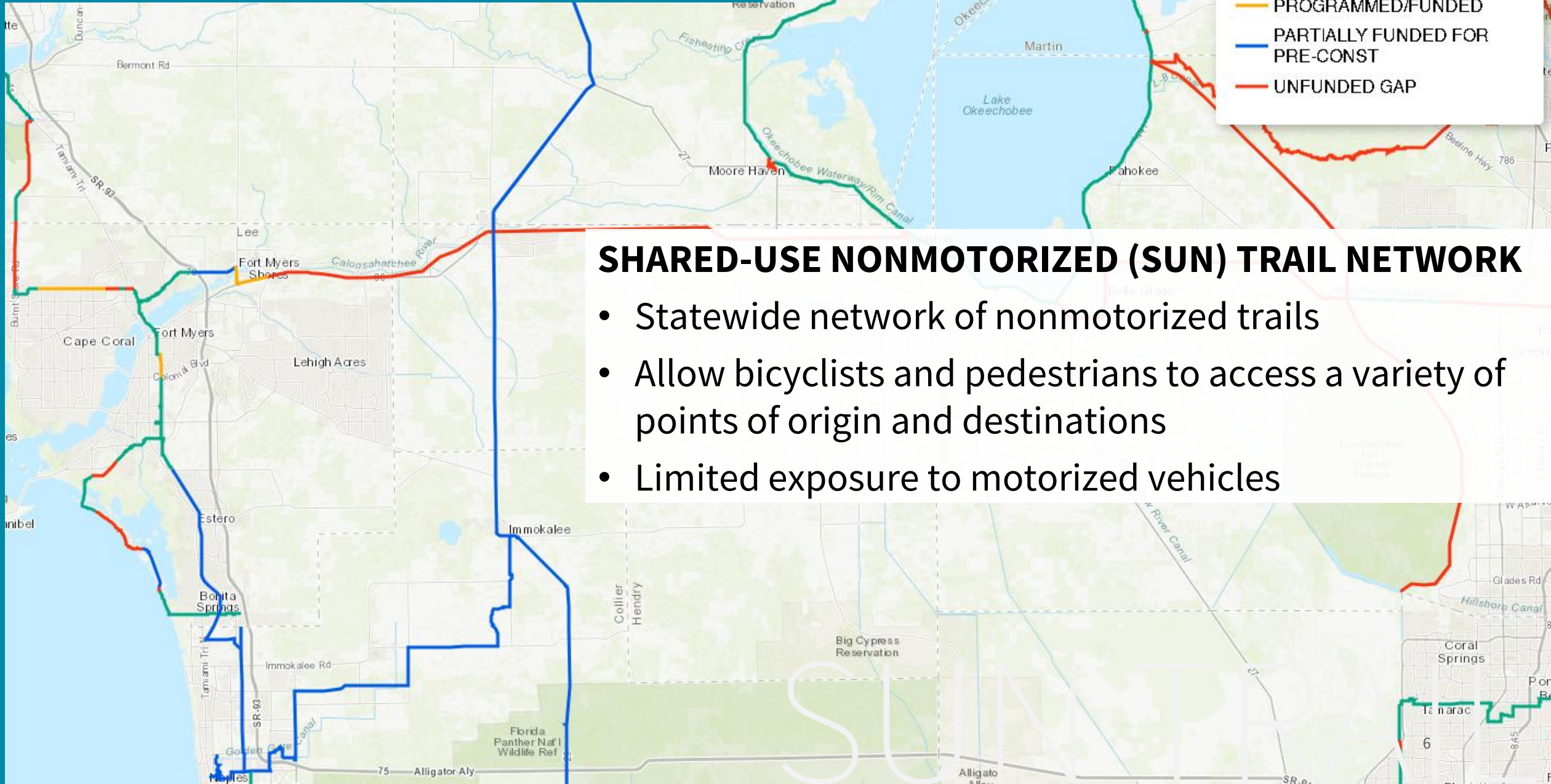
- Administered by the Florida Department of Transportation
- Established in 2015 by 339.81 Florida statutes (fs)
- Updated in 2023 by SB106, doubling funding to \$50 million annually
- Funds the development of statewide trail system
- Paid for by new vehicle tag revenue

## SUN Trail Network

- Existing, planned, and conceptual trails
- Aligns with Florida Greenways and Trails System Plan's Priority Trail Network



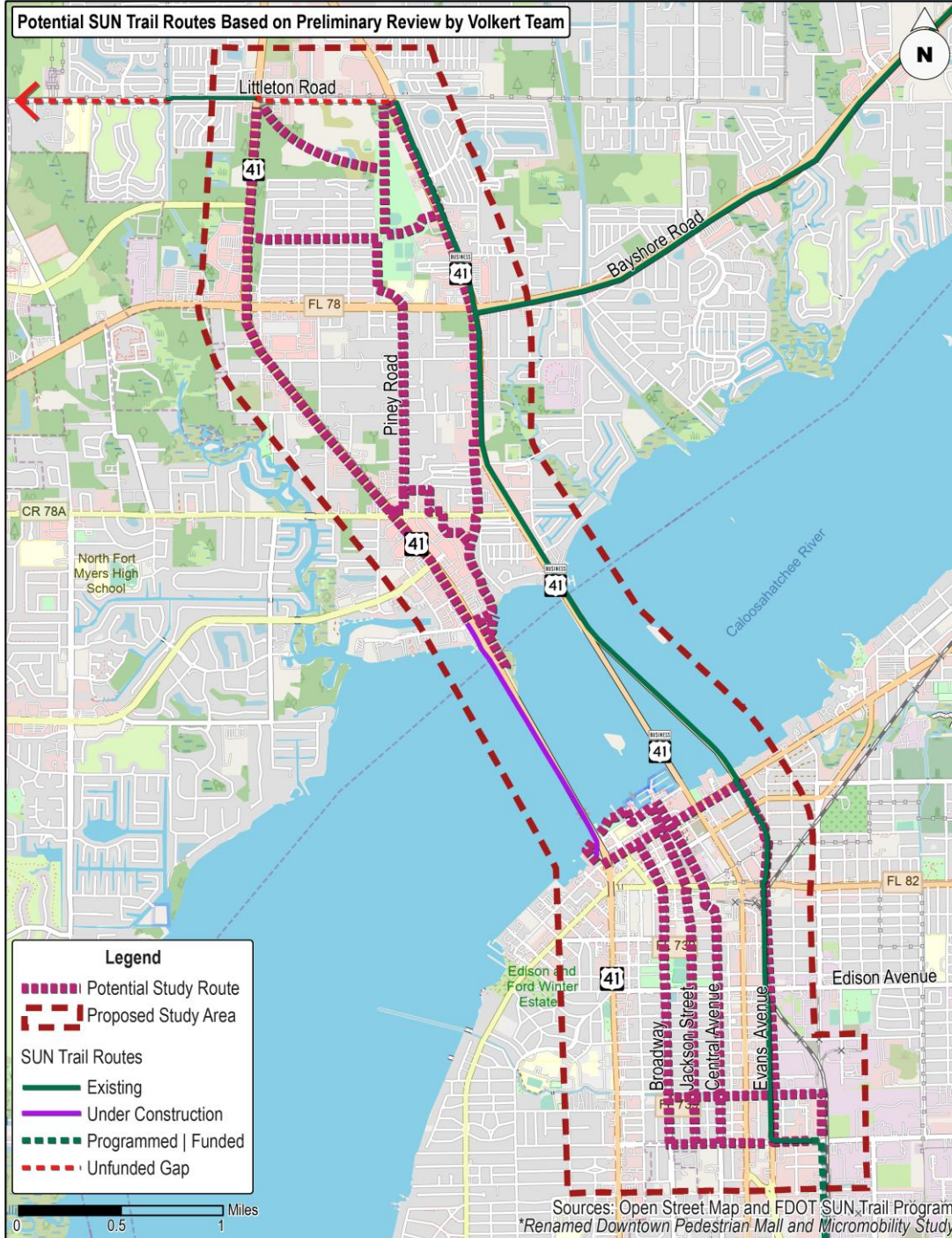
# SUN TRAIL NETWORK



## SHARED-USE NONMOTORIZED (SUN) TRAIL NETWORK

- Statewide network of nonmotorized trails
- Allow bicyclists and pedestrians to access a variety of points of origin and destinations
- Limited exposure to motorized vehicles





## PROJECT PURPOSE

To identify SUN Trail route connecting JYLP Linear Park in Fort Myers to the Kismet Trail in North Fort Myers using the Caloosahatchee Bridge.

## PROJECT GOALS

- ✓ Address Equity
- ✓ Connect to:
  - Caloosahatchee Bridge
  - Central Fort Myers
  - Downtown River District
  - Midtown
  - New and Planned Developments
  - North Fort Myers
  - Parks
- ✓ Improve Accessibility
- ✓ Integrate the Trail with Micromobility
- ✓ Meet SUN Trail Funding Requirements
- ✓ Reduce Crashes, Fatalities, and Serious Injuries
- ✓ Support Local Economic Development



# SCOPE AND TASKS

## PROJECT MANAGEMENT

### KICKOFF MEETING

### DATA COLLECTION AND MAPPING

- Existing Conditions
- Policy Analysis
- Approved and Planned Developments
- Replica Places
- Latent Demand and Trail Usage

### EXISTING CONDITIONS

### ALTERNATIVES EVALUATION

### CONCEPTUAL DEVELOPMENT PLAN

### OFF-ROAD TRAIL OPERATION, MAINTENANCE, AND SECURITY

## ECONOMIC IMPACT

### PRELIMINARY ENVIRONMENTAL ASSESSMENT

### SHARED MICROMOBILITY EXPANSION

### COMMUNITY OUTREACH

### PROJECT STEERING COMMITTEE

### COMMITTEES AND BOARD MEETINGS

### SMART TECHNOLOGY APPLICATION ASSESSMENT

### PRELIMINARY ENVIRONMENTAL CLEARANCE

### PRELIMINARY ENGINEERING ANALYSIS





# DELIVERABLES

## DRAFT AND FINAL REPORT

### TECHNICAL MEMORANDUMS AND REPORTS

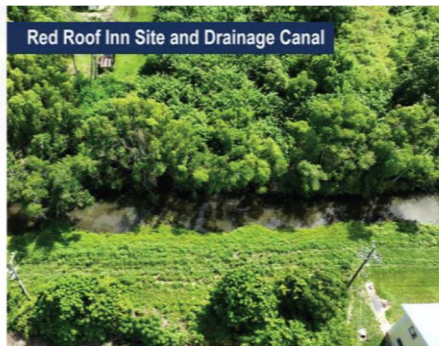
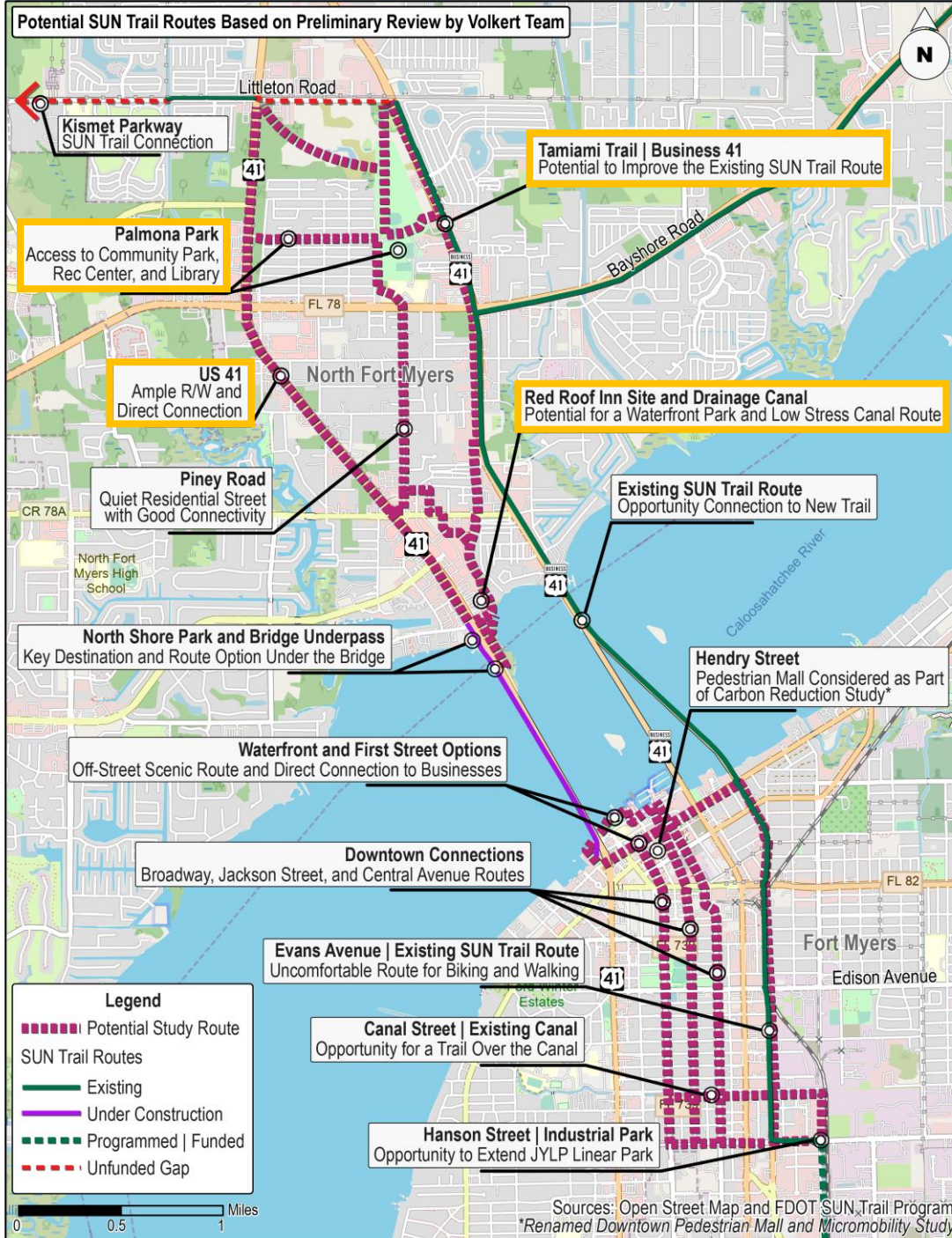
- Existing Conditions
- Policy Analysis
- Approved and Planned Developments
- Latent Demand and Potential Usage
- Alternatives Analysis
- Off-Road Trail Operation, Maintenance, and Security
- Economic Impact
- Preliminary Environmental Assessment
- Shared Micromobility Expansion
- Community Outreach
- Project Steering Committee
- Smart Technology Application Assessment

DELIVERABLES



Caloosahatchee D'Down Alternative Multimodal Feasibility Study	2025												2026					
Task	Jan	Feb	Mar	April	May	June	July	Aug	Sept	Oct	Nov	Dec	Jan	Feb	Mar	April	May	June
Project Administration																		
<b>Task 1:</b> Kickoff Meeting																		
<b>Task 2:</b> Data Collection																		
<i>Mapping</i>																		
<i>Existing Conditions Analysis</i>																		
<i>Policy Analysis</i>																		
<i>Approved and Planned Development Analysis</i>																		
<i>StreetLight or Replica Data Analysis</i>																		
<i>Latent Demand and Potential Usage</i>																		
<b>Task 3:</b> Existing Conditions Report																		
<b>Task 4:</b> Alternatives Evaluation																		
<b>Task 5:</b> Conceptual Development Plan																		
<b>Task 6:</b> Operation, Maintenance, and Security																		
<b>Task 7:</b> Economic Impact																		
<b>Task 8:</b> Preliminary Environmental Assessment																		
<b>Task 9:</b> Shared Micromobility Expansion Analysis																		
<b>Task 10:</b> Community Outreach																		
<i>Community Outreach Plan</i>																		
<i>Project Fact Sheet</i>																		
<i>Contact List</i>																		
<i>Create Project Website</i>																		
<i>Surveys</i>																		
<i>1) Demand and Usage Survey</i>																		
<i>2) Community Survey</i>																		
<i>Planning and Facilitation of In Person Public Workshop (2)</i>																		
<b>Task 11:</b> Project Steering Committee (3)																		
<b>Task 12:</b> Lee County MPO Committees and Board Meetings																		
<i>Committee Meetings (7)</i>																		
<i>MPO Board Meeting (2)</i>																		
<i>Project Partner Board Meetings (2)</i>																		
<i>Project Status Meetings (Up to 16)</i>																		
<i>Draft Feasibility Study Report</i>																		
<i>Executive Summary</i>																		
<i>Review of Draft Feasibility Report</i>																		
<i>Final Report</i>																		
<b>OPTIONAL TASK 1:</b> Smart Technology Application																		
<b>OPTIONAL TASK 2:</b> Preliminary Environmental Clearance																		
<b>OPTIONAL TASK 3:</b> Preliminary Engineering Analysis																		





Red Roof Inn Site and Drainage Canal



### Opportunity

The wetlands area could support a boardwalk along the river from US 41 through the site where the Red Roof Inn was formerly located. The route would provide a safe off-road route.



### Challenge

Coordination with Lee County and relevant agencies may be necessary to get any environmental and land use clearances for a multi-use trail and/or a boardwalk. Additional right-of-way may be required to build a trail along the waterfront connecting to the drainage canal area.



US 41 | North Cleveland Avenue



### Opportunity

This is the most direct route to the planned SUN Trail Connection on Littleton Road and Kismet Parkway. There should be ample R/W on the east and west sides of US 41, and there are existing pedestrian signals at crossings.



### Challenge

Access management and safety are concerns. There are numerous entrances/exits to shopping centers and businesses that trail users would need to cross. Trail comfort would be an issue. This route lacks shade, and US 41 is an arterial with high traffic volumes and noise. This option would need significant landscaping to make it more visually appealing and at least one pedestrian bridge would be needed at a major crossing.



Tamiami Trail | Business 41



### Opportunity

The corridor is already on the SUN Trail Network. There is potential for improving the facility, which is a sidewalk.



### Challenge

Access management and safety are concerns. There are some entrances/exits to shopping centers and businesses that trail users would need to cross. Trail comfort would be an issue. This route lacks shade, and Business 41 is an arterial with high traffic volumes and noise. This option would need significant landscaping to make it more visually appealing.



Palmona Park



### Opportunity

Stockton Street could include a bike boulevard as a direct connection into the neighborhood from US 41 to the North Fort Myers Recreation Center. A potential route could connect to the Recreation Center and pass through the North Fort Myers Disc Golf Course to Business 41 or up through the vacant land north of the golf course to Littleton Road.

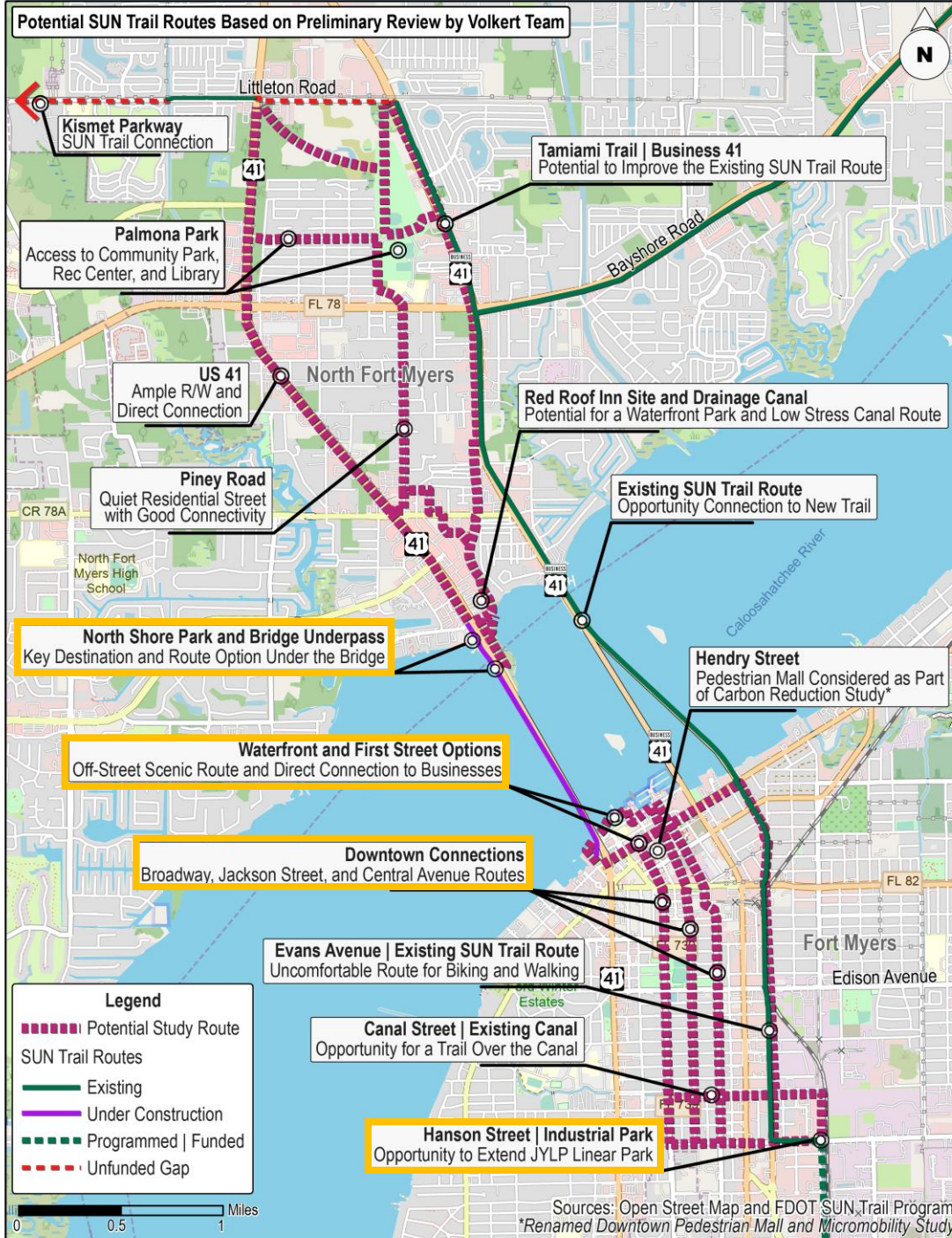


### Challenge

A multi-use trail through the vacant land would require working with the landowner to purchase or lease the R/W for a trail. There appears to be limited R/W on Stockton Street for a multi-use trail. Community buy-in for a bike boulevard will be important.

SUN TRAIL





### Opportunity

An extended trail will provide comfortable and safe off-street options as well as a direction to Canal Street. A Canal Street route option will provide an east-west connection to Downtown Fort Myers routes. The scope of work mentions Canal Street as an option.



### Challenge

The current JYLP Linear Park SUN Trail will end at Hanson Street. Hanson Street is likely constrained. Traffic on Hanson Street and Evans Avenue makes the route feel uncomfortable. Continuing north will require providing a safe crossing at Hanson Street.



### Opportunity

These options will connect the JYLP SUN Trail to Midtown redevelopment, River District in Downtown Fort Myers, and the waterfront. The routes feel more comfortable to use than Evans Street. Fort Myers staff mentioned Jackson Street as a candidate for a bike boulevard concept.



### Challenge

The corridors likely do not have enough R/W for a multi-use trail in the downtown Fort Myers area. There are potential impacts to on-street parking and local businesses. Support from business owners is crucial, and coordination with the upcoming Fort Myers transportation study is important to maintain consistency across plans.



### Opportunity

A waterfront route through Centennial Park would provide a scenic off-road option. A First Street route would provide a picturesque bike boulevard with stops for trail users to rest and refuel.



### Challenge

Fort Myers currently forbids bicycles on downtown sidewalks. Coordination and buy-in from City officials and local businesses will be crucial. First Street is too constrained for a multi-use trail. On-road facilities longer than half a mile on First Street may not be eligible for SUN Trail funding.



### Opportunity

It is a scenic area for a trail head where there are existing parking and restroom facilities. Going under the US 41 bridge could provide a safe crossing to the east side of US 41 that could continue to the drainage canal route option.

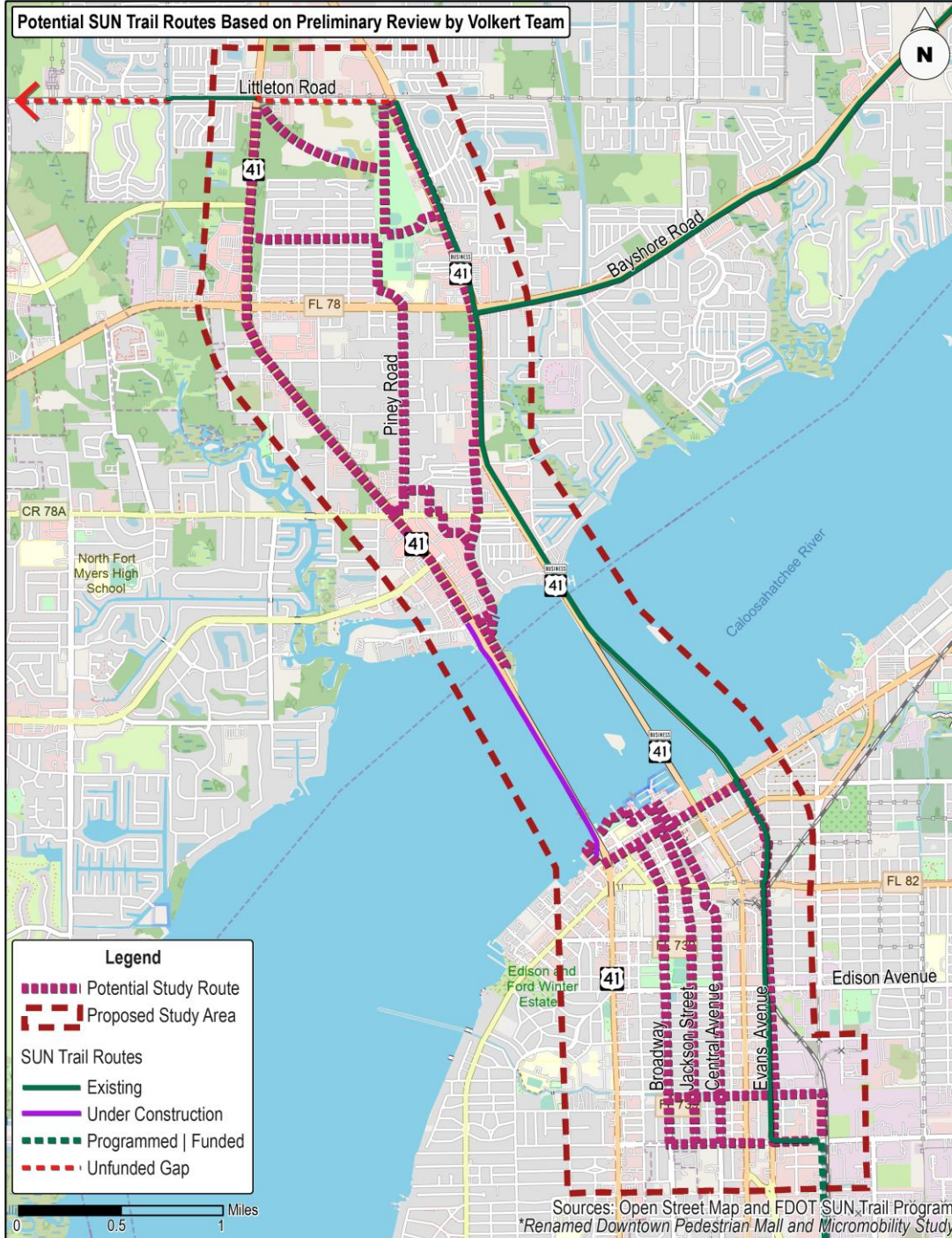


### Challenge

A safe at-grade crossing across US 41 would be necessary without going under the bridge. The vertical clearance under the bridge would need to be considered.

SUN TRAIL





## STUDY AREA BOUNDARIES

- Quarter Mile Buffer Around the Following Corridors:
  - Littleton Road (North)
  - Business 41 (East)
  - Hanson Road (South)
  - US 41 (West)

## STUDY AREA PURPOSE

- Define geography for data collection and analysis
- Include relevant corridors to develop alternatives
- Include key destinations



# DATA COLLECTION

## KEY CONTACTS

- City of Fort Myers
- Lee County and Lee County MPO
- Florida Department of Transportation

## DATA SOURCES

- Land Use: City of Fort Myers and Lee County
- Flow: Replica Places
- Crashes: Signal4 Analytics
- Environmental Inventory: Federal, State, and Local Sources
- Equity: EPA, CJEST, and Census Bureau
- Erosion and Drainage: Federal, State, and Local Sources
- Historical Sites and Structures: Federal, State, and Local sources
- Jobs and Population: Lee County MPO
- Right-of-Way: Lee County Property Appraiser
- Utilities: City of Fort Myers and Lee County
- Traffic Volumes
  - AADT: City of Fort Myers, Lee County, and FDOT
  - Regional Travel Demand Model
- Replica Places
  - What is it?
  - How will it be used?
  - How is it helpful to this project?
- Feedback and Questions

DATA



# FORT MYERS UPDATE

## EXISTING AND FUTURE PLANS

- Carbon Reduction Study (Pedestrian Mall and Micromobility Analysis)
- Collaboratory Resiliency Hub Study
- Midtown and Downtown Initiatives

## EXISTING AND FUTURE PROJECTS

- SPIN's Launch of E-Scooters and E-Bikes



THE  
A  
D  
R



# PROJECT STEERING COMMITTEE



## **PROJECT STEERING COMMITTEE (PSC)**

- What is the PSC?
- Who will be on the PSC?
- When is the PSC kickoff?
- What does it involve?

## **MEETINGS**

- Preliminary Alternatives Review
- Alternative Selection and Wrap Up
- Two Additional, If Needed

## **STAKEHOLDER INTERVIEWS**

- Up to 16



# STAKEHOLDER AND PUBLIC OUTREACH



## ACTIVITIES

- Community Outreach Plan
- Project Fact Sheet (Volkert)
- Contact List
- Project Website
- Public Workshops (2)

## SURVEYS

- Demand and Usage Survey (Alta Leads)
- Community Survey

CE  
m  
R  
n



# TOOLS FOR TRAIL USAGE

## TOOLS FOR TRAIL USAGE AND DEMAND ANALYSIS

- Demand and Usage Survey (Alta)
- Replica Places (Benesch)
- Other Data Sources



# TRAIL USAGE AND DEMAND ANALYSIS

## TRAIL DEMAND AND USAGE

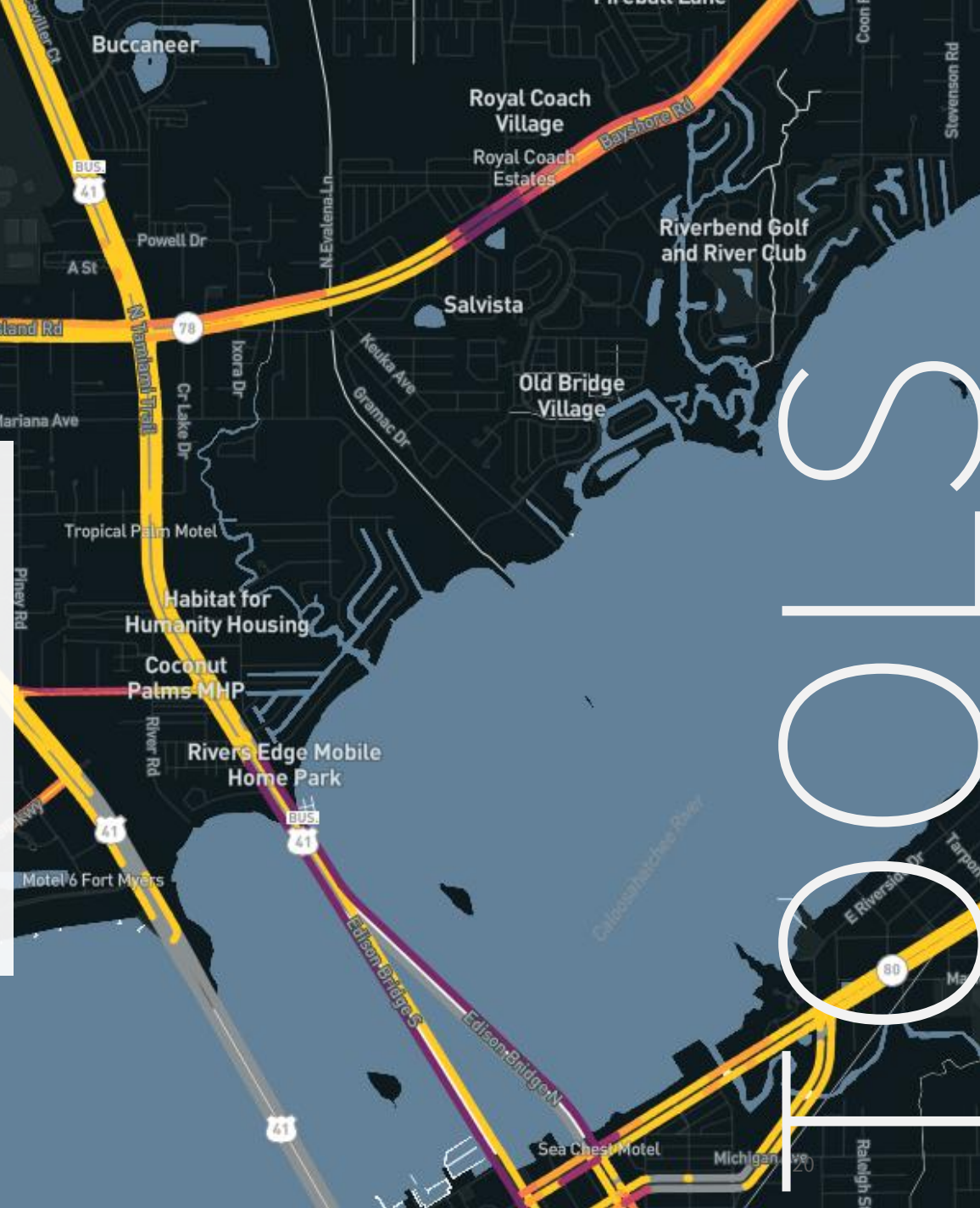
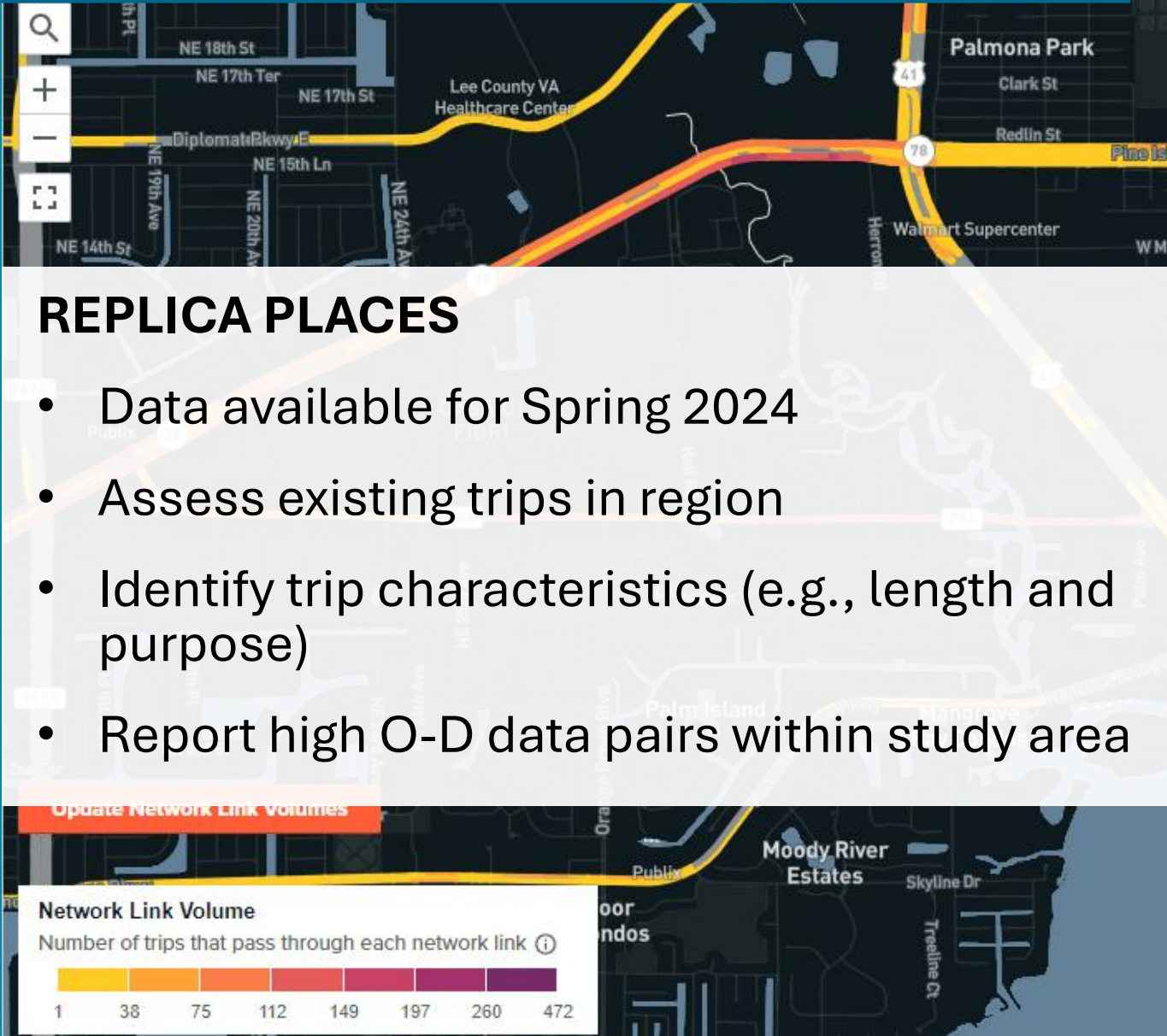
The Alta team uses a range of methods, including:

- Evaluating comparable trails in surrounding region
- Evaluating changes in access to populations and jobs
- Consulting local commute mode splits and their relationship to National Household Travel Survey
- A combination of these strategies
- The specific strategy chosen will be based on available data from Task 2.5 led by Volkert
- At minimum, Alta plans to estimate potential demand for the Caloosahatchee SUN Trail based on evaluation of comparable trails.





# TOOLS FOR TRAIL USAGE





[illegible]





QUESTIONS